

Kannegiesser Cleanroom Technology

Washer Extractor FAVORIT High Clean
Dryer TM 50 High Clean



What is a Cleanroom?

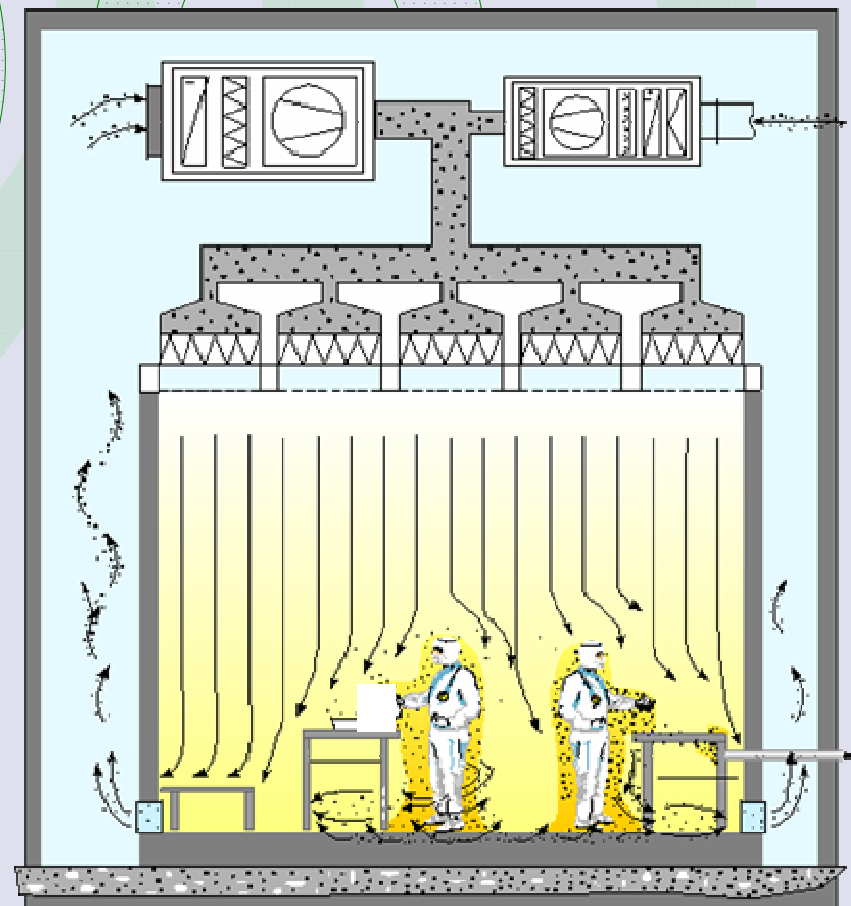
Definition:

„A cleanroom is a hermetically sealed area, into which over a filter system almost dust free air is let in.“

Washing and drying of workwear and high-risk garments

- Micro-electronic industry
- Pharmaceutical plants
- Food factories
- Biotechnological industry

→ to solve particles from the workwear



What is a Cleanroom?

Cleanroom classification

Reference volume:
1 cft

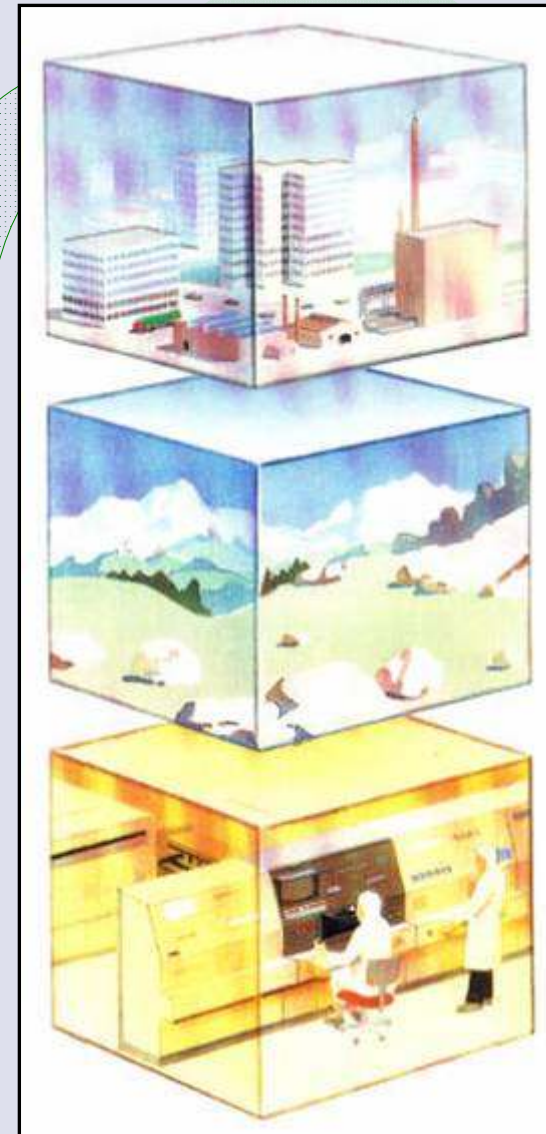
Particle size:
> 0,5 microns

Urban air:
15 to 100 Mio. particles

Air in 2000 m height:
up to **10 Mio.** particles

Microtechnology: **10 to 100** particles

Micro-electronic technology:
0 to 1 particles



Washer Extractor FAVORIT High Clean



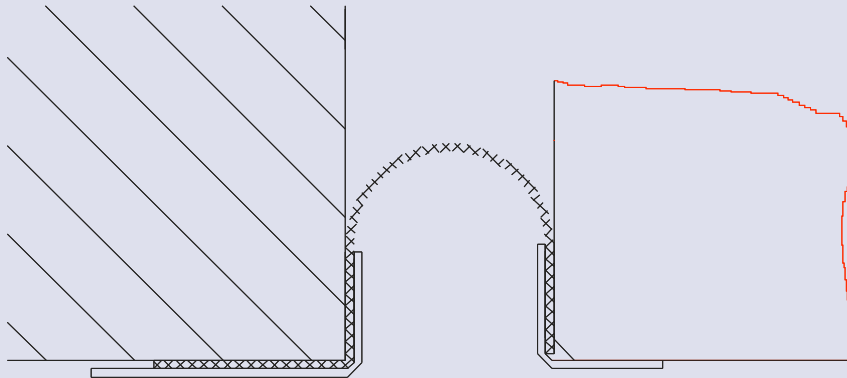
Loading side

All machines indirect steam heated



Unloading side

Washer Extractor FAVORIT High Clean



Barrier wall connection made of EPDM (ethylene-propylene-diene-monomere-rubber) or SILICON rubber



Loading side → normal pressure

Unloading side → increased pressure

Sealing of front panel with EPDM

is very important due to the pressure

difference!

Washer Extractor FAVORIT High Clean



Front material made of stainless steel
to avoid particle deposit

Inner drum



Water valves



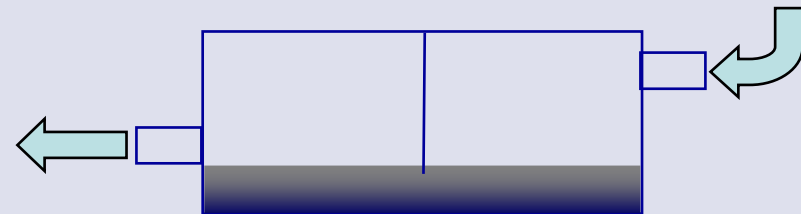
All parts with water contact
are made of V4A (316 L)
High grade stainless steel

Washer Extractor FAVORIT High Clean

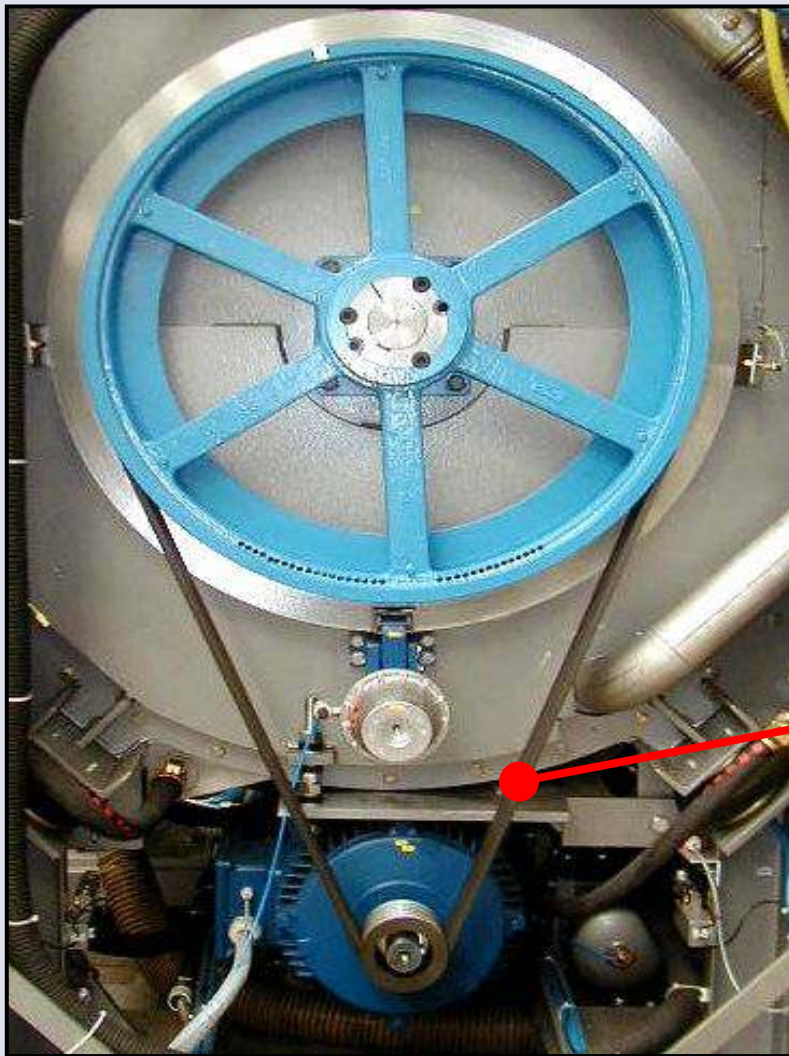


Stainless steel syphon box in the drain piping

- prevent particles from getting back during extracting, draining



Washer Extractor FAVORIT High Clean



Electric brakes

No abrasion like at mechanic brakes

Mechanic brake only for securing drum position (loading & unloading) and emergency stop

Drive

“Red Power” belt with less abrasion

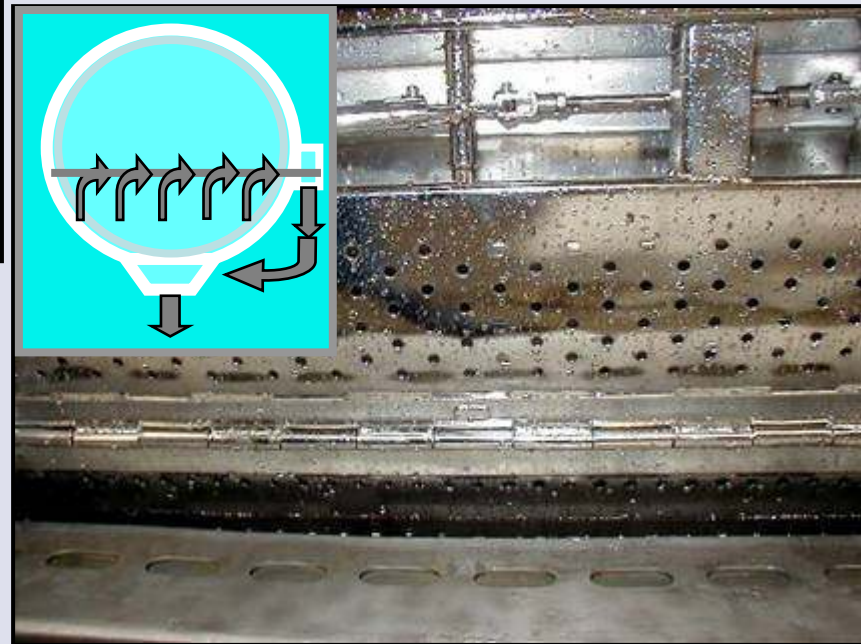
Washer Extractor FAVORIT High Clean Options



Inner drum electrolytically polished (optional)



Also door is perforated with "CareWash" perforation



SKIM OFF SYSTEM
(optional)



Takes particles off during rinse process

Dryer Model TM 50 High Clean

TM 50 Standard



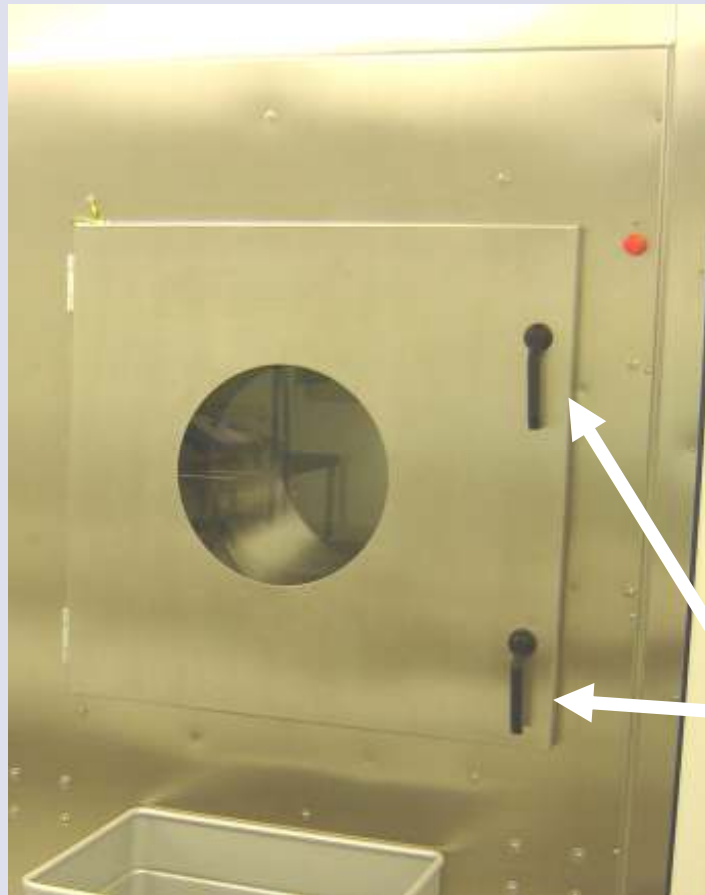
- One door handle to close door
- Painted front panel
- Ram protection rail

TM 50 High Clean

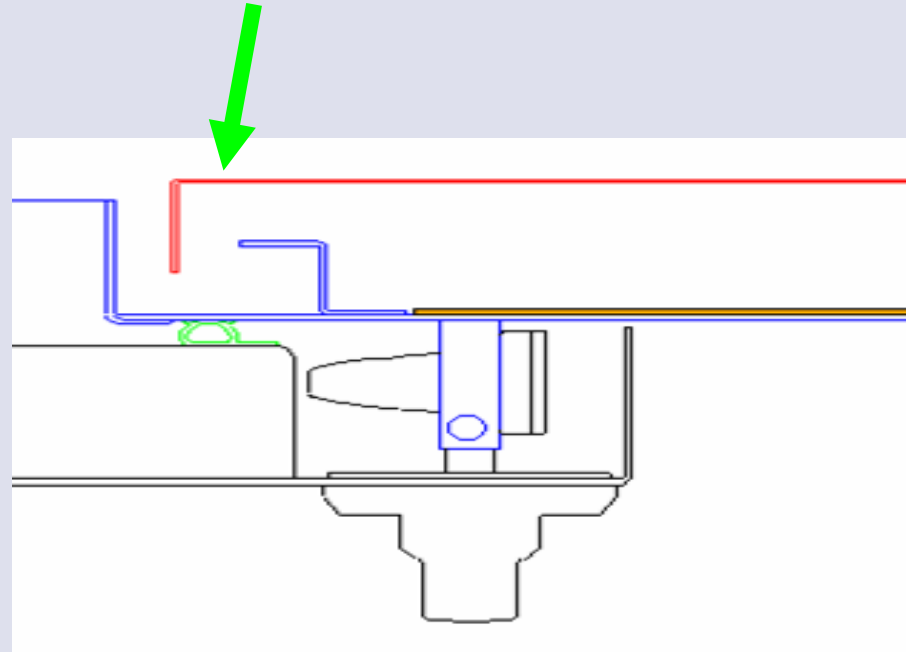


- Two rotating door handles to close door tight (air sealed)
- Stainless steel front panel
- No ram protection rail

Dryer Model TM 50 High Clean

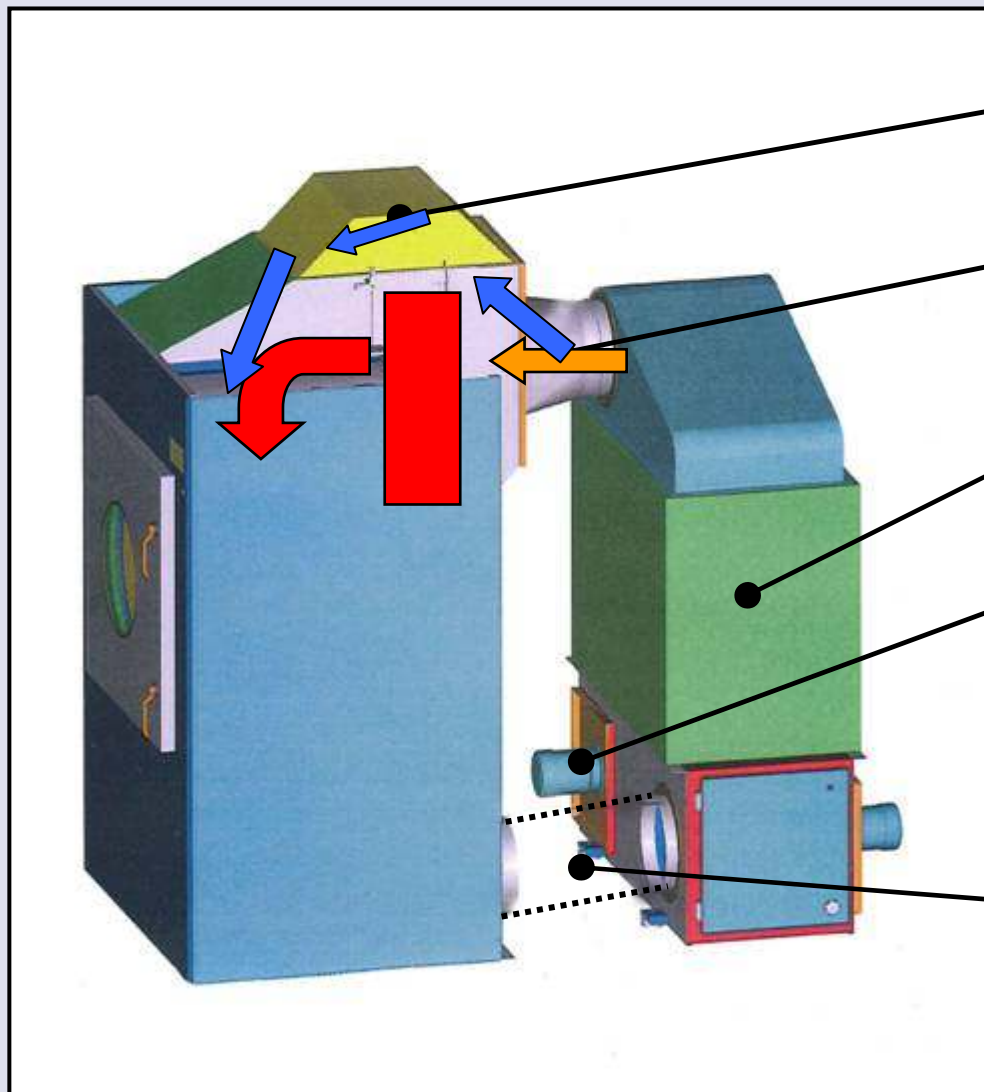


Special EPDM-door sealing
to avoid particle emigration



Two door handles
Perfect fit of the door sealing

Dryer Model TM 50 High Clean Airflow New



Heat exchanger-bypass device
(optional)

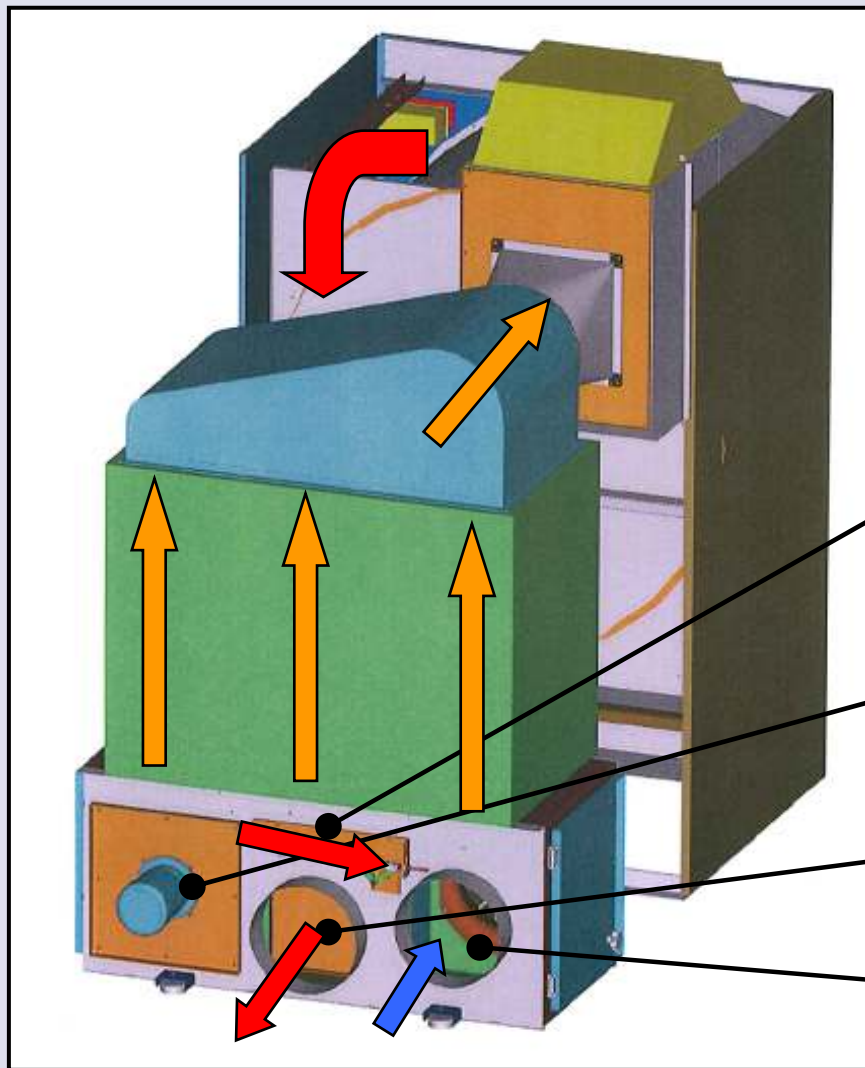
Supply air socket

Filter box

Additional pressure fan
(optional)

Exhaust air connection
(e.g. by flexible tube)

Dryer Model TM 50 High Clean Airflow New



Airflow

External recirculating air flap
(optional)

Exhaust fan

Exhaust opening

Supply air opening

Thank you for your attention!

Jens Appelbaum

+49-5733-12 298

jappelbaum@kannegiesser.de

